

# LARSEN LIGHTS

Founded in 2011, we try to give our customers the best price and a great product. We do not have an expensive warehouse or office, just enough to run the business.

We offer up to a 3 year warranty depending the on product, most LED lights have a 3 year warranty. We are constantly looking for better products, and are developing new products as needed.

As always – please be safe – think of your fellow motorists on the highway, do not use the high power work lights when meeting oncoming traffic. For more info about the products, please visit [www.LarsenLights.com](http://www.LarsenLights.com)

Larsen Lights LLC  
729 7th Street South  
Breckenridge, MN 56520

Phone : 218-770-6411  
Order line : 1-888-290-7411

e-mail : [info@larsenlights.com](mailto:info@larsenlights.com)  
web : [www.LarsenLights.com](http://www.LarsenLights.com)

*Specifications, info and prices are subject to change without notice. Lumen on the lights are from a 3<sup>rd</sup> party, we cannot check the lumen ourself, use the number at your own risk. We suggest using watt / amp as a guide to light output. Not liable for printing errors.*

# LARSEN LIGHTS



ORDER TODAY, SEE THE DIFFERENCE YOURSELF!



[WWW.LARSENLIGHTS.COM](http://WWW.LARSENLIGHTS.COM)

# LEDs

## How They Work

LEDs differ from traditional light sources in the way they produce light. In an incandescent lamp, a tungsten filament is heated by electric current until it glows or emits light. An LED, in contrast, is a semiconductor diode. It consists of a chip of semi-conducting material treated to create a structure called a p-n (positive-negative) junction.

### PAR-36S

Par-36 size LED Light, Available in 60° flood, 40° trapezoid, 20° spot and a Hi-Lo beam. 1450 lumen vs. halogen at 400-800 lumen. This light is 2-3 times better than your old halogen light, plus you get the nice 5000-6000k white light. Flood beam, Trapezoid beam, Spot beam, Hi-Lo beam. LED Power: 18 watt CREE LED 6 x 3W/PC, Size: 4.5" round. Lumen : 1450 Raw, 1260 Effective. Power use: 1.19 amp @ 12V – 14 watt. Fits all brands that use the 4.5" round Par-36 light, tractors, combines and more. Add a new housing and you can use the PAR-36S light anywhere.



### AAL-18 flood

An 18 watt recessed led light. Mount in bumper or other flat surface. 90° flood. LED Power: 18 Watt, 6 x 3w CREE LEDs. Size : 4.7 x 3.5 x 3.15 (W x H x D). Lumen : 2160 Raw, 1440 Effective. Power use : 1.5 amp @ 12V – 18 watt.



### LED-20

The LED-20 is a small rectangular LED light, but with 2 x 10 watt CREE LED chips, the Lumens reach 1700 ! 90° flood beam. Mount it anywhere you need extra light, the small size makes it fit almost anywhere. LED Power: 20 Watt CREE LED 2 x 10W/PC. Size : 4.3 x 3.5 x 2.2 (W x H x D). Lumen : 2040 Raw, 1520 Effective. Power use: 1.4 amp @ 12V – 17 watt. Use for : Grain tank, Stubble light, Inside machinery and more.



### LED-420

Square 3x3 size, 20 watt, Cree LED's 60° flood or 20° spot. Great little light for use anywhere you need extra light. Can be ordered with covers to change the color of the light, Clear, Green, Blue, Red or Amber. LED Power: 20 watt 4 x 5w CREE LEDs. Size : 3.15 x 3.5 x 3.2 (W x H x D). Lumen : 1620 Raw, 1490 Effective. Power use : 1.43 amp @ 12V – 17 watt. Use for : Tractors, Combines, Headers, Trailers, Tool bars, Yellow equipment, ATV's and more.



### JD-2x5

LED light for top front cab on the 7000-8000 series tractor, and front hood light on older JD's, 55 and 60 series. 30° beam pattern. LED Power: 20Watt CREE LED 4 x 5W/PC. Lumen : 2160 Raw, 1440 Effective. Power use: 1.5 amp @ 12V – 18 watt.



### LED-624

Rectangular 24 watt LED flood light, small form factor, fits in place of many small OEM lights. 60° flood beam, 1800 lumen. This is a nice all around work light, smaller size that can be used in place of many OEM lights. LED Power: 24 Watt, Epistar LED 8 x 3W/PC. Size: 5.5 x 4.5 x 2.25 (W x H x D). Lumen : 1800 Raw, 1340 Effective. Power use: 1.6 amp @ 12V – 19.2 watt. Use for : Tractors, Service trucks, Combines.



### LED-824 S3

This a well liked oval 24 watt 60° flood light, mounts anywhere with the stainless steel bracket. 45° trapezoid beam. LED Power: 24 Watt, Epistar LED 8 x 3W/PC. Size : 5.5 x 4.6 x 2.5 (W x H x D). Lumen : 2090 Raw, 1520 Effective. Power use : 1.55 amp @ 12V – 19 watt. Use for: Tractors, Combines, Yellow equipment, ATV's and more.



### LED-6242 Side mount / Ball mount

Rectangular 24 watt Side-mount 60° flood light. This light fits on many tractors using the side mount bracket. Comes with 2 brackets, one ball mount and one cylinder style mount. Works on JD, CaseIH and more. LED Power: 24 Watt, 8 x 3 watt CREE LED's. Size : 5.7 x 3.3 x 2.4 (W x H x D). Power use : 1.50 amp @ 12V – 18 watt. Lumen : 2160 Raw, 1440 Effective.



### LED-525

Round 25 watt CREE LED, spot light, optical glass lens. An add on driving light. 25 Watt CREE LED, COB 25W. Size : 4.5 OD x 5.2 x 3.7 (W x H x D). Light output over 2000 lumen. Power use : 2.1 amp @ 12V – 25 watt.



### LED-27

The LED-27 is an excellent and cost efficient light for many add on applications. With less than 2 amp power draw, you can mount this light anywhere you need extra light. Round or square. 60° Flood. LED Power: 27 watt, Epistar LED 9 x 3W/PC. Size : LED-27 Round 4.5 OD x 5.3 x 2.1 (W x H x D). Size : LED-27 Square 4.5 x 5.5 x 2.1 (W x D x H). Lumen : 2530 raw, 2025 effective. Power use: 1.95 amp @ 12V – 23.4 watt. Use for : Tractors, Combines, Headers, Trailers, Tool bars, Yellow equipment and more.



### AAL-527

27 watt oval LED flood light, like the AAL-836, but smaller size this light fits smaller tractors and many other vehicles. 90° flood. LED Power: 27 Watt, CREE LED 9 x 3W/PC. Size : 5.8" x 6" x 2.9 (W x H x D). Lumen : 2520 Raw, 1600 Effective. Power use : 1.7 amp @ 12V – 21 watt. Use for : Tractors, Combines and more.



### RG-21 Side Mount

Rectangular side mount style LED Light, 30 watt, trapezoid beam. Trapezoid beam 40°. Works as any work light, but on the RG-21 the mount is at the side of the light. LED Power: 30 watt, Epistar LED 6 x 5W/PC. Size : 6 x 4 x 2.9 (W x H x D). Power use : 2.1 amp @ 12V – 25 watt. Lumen : 2750 Raw, 1750 Effective.



### LED-630

Ball mount LED light that fit some 7000 series and 8000 series JD tractors. 30 watt, CREE LED's. 40° headlight or 60° flood. Add a bracket that makes the light mount like a standard light for any application. Larsen Lights only! LED Power: 30 watt CREE XT-E LED's 6 x 5W. Lumen : 3600 Raw, 2700 Effective. Power use : 2.3 amp @ 12V - 28 watt. Use for : JD 7000 series and 8000 series that use similar lights. Replaces JD RE154898 & RE154900.



### LED-36 sealed beam replacement 36 watt LED 5.5" round

Round 36 watt sealed beam replacement LED light, Single beam only. LED Power: 36 Watt Epistar LED, 12 x 3W/PC. Size : 5.5 OD. Lumen : 3000 Raw, 2100 Effective. Power use : 2.5 amp @ 12V – 30 watt.



### AAL-836

Oval 36 watt LED light, 90° flood, or as a spot light. Nice looking light, that works well for many applications. LED Power: 36 watt, CREE LED 12 x 3watt/pc. Size : 7 x 6.25 x 3 (W x H x D). Lumen : 3190 Raw, 2610 Effective. Power use : 2.38 amp @ 12V – 29 watt. Use for : Tractors, Combines and more.



# CAMERA SYSTEMS

Great Camera Systems for a Great Price!  
• 7 & 9 inch Monitors  
• 90° & 120° Cameras

Adding a camera system to your equipment is helpful in many ways – you can see what's behind large equipment, monitor tank levels, monitor shaft rotation, wireless systems can help operators load trucks and trailers. The cameras also help you work safer – you can see the person otherwise hidden behind machinery. ORDER A SYSTEM TODAY!

### Larsen Monitor VPM7003

7 Inch LCD Monitor, up to 4 wired cameras can be connected to this monitor. One camera can be monitored, push button to select other cameras. Accessories included for 7" models : 1- U-support bracket, 1-Center mount bracket, 1- Sun shield, 4- Angle adjustment screws, 1- Remote control, 1- User's Manual, 2- Power cable. Please add Cameras and Cables if needed.



### Larsen Monitor VPM7003

Quad View  
7 Inch LCD Monitor, up to 4 wired cameras can be connected, and viewed on this QUAD view monitor at the same time. Accessories included for 7" models : 1- U-support bracket, 1-Center mount bracket, 1- Sun shield, 4- Angle adjustment screws, 1- Remote control, 1- User's Manual, 2- Power cable. Please add Cameras and Cables if needed.



### Larsen Monitor VPM9002

Quad View  
9 Inch LCD Monitor, up to 4 wired cameras can be connected, and viewed on this QUAD view monitor at the same time. Accessories included for 9" models : 1-Center mount bracket, 1- Sun shield, 1- Remote control, 1- User's Manual, 2- Power cables. Please add Cameras and Cables if needed.



### Larsen Camera VPC2011 90° or 120° view.

HD CMOS REAR VIEW CAMERA, IR-Cut technology, Built in Microphone, 10g vibration test. 90° or 120° view. Infrared LED's for night vision. Camera model VPC206F use white LED's for night vision.



### Larsen Camera Cables

Cables for cameras / monitors. 15', 30', 50' & 65" lengths. 4 pin connector, fits Cabcam.



### Trailer Cable for Camera Systems

Trailer cable for easy connection to trailer, 2 cameras supported. Included is a 10" coil cable and 2 outlets.



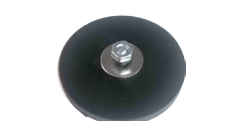
### Extension Antenna for Wi-Fi Camera

10' Corded antenna extension, magnetic base.



### Magnet for Camera

Powerful magnet with mounting stud and washers / nut for easy camera mounting.



### STONEKAM BRAND

#### Wireless Digital Camera System – DM700

Digital wireless gives you the same quality video feed as wired systems. No more flickering screens, or "snow" on the screen. Just a clear picture with no interference. Up to 1500'+ range. 7 Inch Wireless color LCD monitor with digital screen. 1 120° Camera included. The display can be paired with up to 3 cameras, but as of right now we cannot pair multiple displays to the same camera. To do that you need the wireless analog displays. (please contact us if this is needed)



#### Wired Camera System – MO700 7" screen.

Wired Camera system with 7" TFT LCD monitor, 120° camera & 30' cable included .



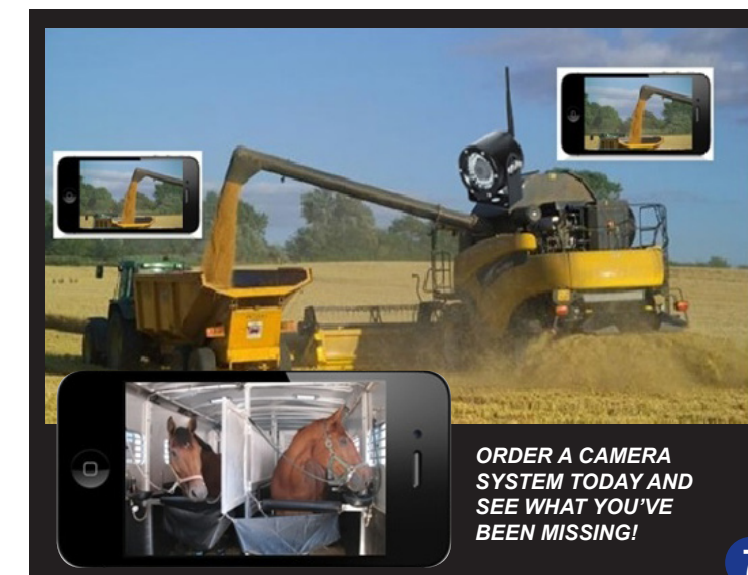
#### Wired Camera System - MO-146-QUAD, 9" touch screen.

Wired Camera system with 9" TFT LCD QUAD monitor, 30' cable & one 120° camera. See up to 4 cameras at the same time. Touch screen monitor.



#### Wi-Fi Camera for Ipad / Android

WiFi camera for Android phones and tablets, Ipad and Iphones. Direct link to the phone or tablet, or use router and internet for long distance surveillance. Range : up to 400 feet



ORDER A CAMERA SYSTEM TODAY AND SEE WHAT YOU'VE BEEN MISSING!

# WARNING LIGHTS

Be Seen on the Road -  
You Might Save a Life!

## ES3600 SERIES LED BEACONS

The ES3600 series LED beacons use a model 5050 SMD chip – this is a very high output chip, that makes the light highly visible even in sunlight. The 3604 model uses 60 SMD's per light, the 3605 model uses 40 per light. Each light has 3 flash settings - rotate, single flash & double flash. 3 different variations of the beacon – Pole mount with internal power connector, Stud mount and Magnetic mount.



### 3604E

Stud mount, 60 SMD's, Fluted amber lens cover.



### 3605E

Stud mount, 40 SMD's, Clear amber lens cover.



### 3604H

Pole mount, 60 SMD's, Fluted amber lens cover. Flexible base. Pole not included.



### 3605H

Pole mount, 40 SMD's, Clear amber lens cover. Flexible base. Pole not included.



### 3604D

Magnetic / suction cup mount, 60 SMD's, Fluted amber lens cover. Lighter plug-in included on a coiled cord.



### 3605D

Magnetic / suction cup mount, 40 SMD's, Clear amber lens cover. Lighter plug-in included on a coiled cord.



### Pole for 3604/5 H beacons

Straight threaded 1" pole for mounting on any vehicle. Has internal power connector for the H series beacon, needed if your vehicle does not have a pole mount.

## IP RATINGS EXPLAINED:

The IP Code consists of the letters IP, followed by two digits and an optional letter. As defined in international standard IEC 60529, it classifies the degrees of protection provided against the intrusion of solid objects, dust, accidental contact, and water in electrical enclosures. The standard aims to provide users more detailed information than vague marketing terms such as waterproof.

IP64	Protected from total dust ingress.	Protected from water spray from any direction.
IP65	Protected from total dust ingress.	Protected from low pressure water jets from any direction.
IP66	Protected from total dust ingress.	Protected from high pressure water jets from any direction.
IP67	Protected from total dust ingress.	Protected from immersion between 15 centimeters and 1 meter in depth.
IP68	Protected from total dust ingress.	Protected from long term immersion up to a specified pressure.
IP69K	Protected from total dust ingress.	Protected from steam-jet cleaning.

*The use of beacons and strobe lights are a great tool to improve how visible you are on the highway, in some states it is now the law. The LED beacons and warning lights are a great way to add safety to farm and construction equipment.*

## ES3000 SERIES WARNING LIGHTS



### ES3615L

Low profile amber warning light, magnetic mount, 8 flash patterns. Lighter plug-in. Clear lens + amber LED's. 12 and 24 volt. 25500LM. Size : 14 x 7 x 2 inch



### ES3615S

Low profile amber warning light, magnetic mount, 8 flash patterns. Lighter plug-in. Clear lens + amber LED's. 12 and 24 volt. 24000LM. Size : 10 x 7 x 2 inch



### ES3464

Amber low profile warning light, magnetic mount, 4 flash patterns. Lighter plug-in. 12 volt only. Size 14 x 8.5 x 3 inch



### ES3400

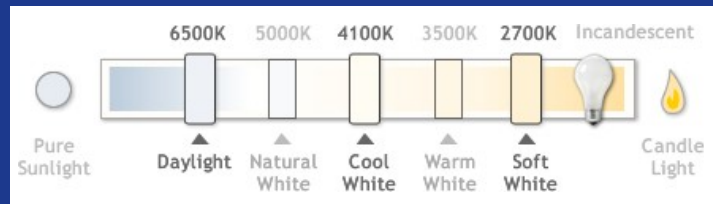
Amber 36" LED warning light. High power LED's, very bright flash, 2 patterns controlled by switch included. Size : 36 x 12 x 5 inch



### ES3483

Amber LED warning light, heavy duty magnetic mounts, lighter plug-in. Size : 17 x 8 x 6 inch

## WHAT IS KELVIN COLOR TEMPERATURE?



### Sunlight at Noon: 4500K - 6500K

The whitest natural light occurs when the sun is directly overhead. HID and LED lights are in this range.

### Incandescent & Halogen Bulbs: 2500K - 3500K

Commonly found in lamps and fixtures in your older truck, tractor, car and so on.

### Candle Light: 2000K

Candles burn a soft yellow light. One lumen is the amount of light produced by a single candle.

## LEDs

### LED-841 Spot

Rectangular 8 x 5 watt CREE LED's, 2800 lumen, makes this light a nice addition to any 4-wheeler, or anywhere else you need distance light. 10° spot light. LED Power: 40 watt. 8 X 5W CREE LED. Size 6.5 x 1.9 x 2.3 (W x H x D). Light output about 1980 lumen. Power used = 22 watt, 1.86 amp @ 12v.



### LED-842 Flood

The LED-842 flood is a LED light similar in size to the LED-841 Spot. It is a nice small flood light that provides a wide pattern of light. LED Power: 30 watt. 6 X 5W CREE LED. Size : 6 x 1.9 x 2.3 (W x H x D). Light output about 1700 lumen. Power used = 19 watt, 1.6 amp @ 12v.



### LED-440

The LED-440R is a excellent light for many add on applications. With a 3 amp power draw, you can mount this light almost anywhere you need extra light. Round or square. 60° Flood or 15° Spot. LED Power: 40Watt CREE LED, 4 x 10W/PC. Size : Square 5 x 6.3 x 3.5 (W x H x D). Size : Round 4.7 OD x 5.6 x 4.1 (W x H x D). Lumen : 4320 Raw, 3240 Effective. Power use : 3.0 amp @ 12V – 36 watt.



Use for : Tractors, Combines, Headers, Trailers, Tool bars, Yellow equipment and more.

### LED-42

4.5" round LED light, can be used as a total replacement light for the standard JD 30, 40 and 50 series tractors + many others. Size is similar to the PAR-36 lights. 60° flood or 8° spot. LED Power: 42 Watt, Epistar LED 14 x 3W/PC. Size : 4.5 OD x 5.2 x 2.9 (W x H x D). Lumen: 3900 Raw, 2520 Effective. Power use: 3 amp @ 12V-36 watt.



Use for : Tractors, Combines, Headers, Trailers, Tool bars, Yellow equipment and more.

### 4x6 Hi-Lo sealed beam replacement LED light

Sealed beam LED replacement lens, can be used as a stand alone light with included bracket. 45 watt total. This light works in the front grill as a replacement for the standard 4 x 6 halogen sealed beam headlight. Not for highway use. LED Power: 45 Watt, Epistar LED 15 x 3W/PC. Size : 6.5 x 4.33 x 2.95 (W x H x D). Power use High beam: 2.7 amp @ 12V – 32.4 watt. Lumen High beam : 3540 raw, 2592 Effective. Power use Low beam: 1.08 amp @ 12V – 13 watt. Lumen Low beam : 1430 raw, 1230 Effective.



### AAL-745, 4 x 6 sealed beam replacement Hi-Lo LED light

A 4x6 Hi-Lo, 45 watt LED Light, the bracket can be removed, so the light can be used as a sealed beam replacement light. This light works in the front grill as a replacement for the standard 4 x 6 halogen sealed beam headlight. Not for highway use. LED Power: 45 Watt EPISTAR LED Each 3W/PC. Size : 6.5 x 4.25 x 3 (W x H x D). Power use High beam: 2.7 amp @ 12V – 32.4 watt. Lumen High beam : 3540 raw, 2592 Effective. Power use Low beam: 1.58 amp @ 12V – 19 watt. Lumen Low beam : 1900 raw, 1520 Effective.



### LED-845 Series / LED-845 "easy"

4 x 6 style, 45 watt, LED 60° flood light. 15 x 3 watt Epistar LED's. Nice reliable light that can be used instead of a 4x6 halogen light. Works on many CaseIH and JD tractors using the "Easy" bracket – a bracket that makes the light very compact. LED Power: 45Watt, Epistar LED 15 x 3W/PC. Size : 6.3 x 5 x 3.3 (W x H x D). Operating Volt: 10-30Volt DC. Lumen LED-845 : 3900 Raw, 2800 Effective. Lumen LED-845-2 : 3900 Raw, 3000 Effective. Power use : 3.3 amp @ 12V – 40 watt. Standard bracket : Tractors, Combines – and much more "Easy" mount : Magnums 10, 20, 30, 40 and 50 series, STX series and older CaseIH, JD and more.



### LED-50

A 4 x 6 style work light with 5 x 10 watt CREE LED's and a wide beam lens makes this light an excellent choice for service trucks, excavators, tractors and more. 90° Flood. LED Power: 50 Watt, CREE LED 5 x 10W/PC. Size : 5.7 x 5.7 x 3.15 (W x H x D). Lumen : 5700 Raw, 4200 Effective. Power use : 4 amp @ 12V – 48 watt.

Use for : Tractors, Combines, Headers, Trailers, Tool bars, Yellow equipment and more.



### LED-660R

Round 6 x 10 watt CREE LED's, 5000 lumen in a 60° flood pattern. Very powerful light, well liked on pay-loaders and tractors. LED Power: 60 Watt, 6 x 10w CREE LEDs, Size : 4.5 OD x 5.5 x 2 (W x H x D). Lumen : 5200 Raw, 3840 Effective. Power use : 4 amp @ 12V – 48 watt.

Use for : Tractors, Combines, Headers, Trailers, Tool bars, Yellow equipment and more.



### LED-60

5.5" Square LED light, this is the light recommended for large tractors/4WD's where distance and width is needed. CREE LED's, 90° Flood. LED Power: 60 watt, CREE LED 6 x 10W. Size : 5.4 x 6.2 x 5.1 (W x H x D). Power use : 4.4 amp @ 12V – 53 watt. Lumen : 6300 Raw, 4200 Effective.

Use for : Large 4 WD tractors, Yellow equipment and more.



### LED-3265

The 3265 is the same size as the oval Speaker 7150, used on many tractors and combines. 13 x 5 watt CREE LED's. 60° flood beam. Order with JD bracket if used on 70 series combines. LED Power: 65 watt, CREE LED 13 x 5W. Size : 6.5 x 5.7 x 3.7 (W X H x D). Power use : 3.75 amp @ 12V – 45 watt. Lumen : 5460 Raw, 2700 Effective.

Use for : Tractors, Combines and more.



### LED-565

The LED-565 is a oval spot light that provides a tight 8.5° pattern, use it where distance is needed. LED Power: 65W, Epistar LED 13pcs x 5w . Size : 6.3 x 5.7 x 5 (W x H x D). Power use : 4.45 amp @ 12V – 53 watt. Lumen : 5200 Raw, 3710 Effective. Use for : Anywhere distance light is needed.



### LED-70

7 x 10 watt CREE LED's, 30° driving beam or as a combo beam with 4 flood LED's and 3 spot LED's. This is a great light for distance on just about anything. Large 6" Round light. LED Power: 70W, CREE LED 7 x 10W/PC. Size : 6.1 OD x 7.2 x 3.95 (W x H x D). . Power use : 5.2 amp @ 12V – 62 watt. Lumen : 7000 Raw, 5270 Effective .

Use for : Tractors, Trucks (no DOT) Pickups.



### LED-80

8 x 10 watt CREE LED's, a total of 7800 lumen, this light is a great narrow flood light, nice mix of distance and width. This is a large 5.6" square light. LED Power: 80 Watt, CREE LED 8 x 10W/PC. Size : 5.5 x 7.1 x 3.7 (W x H x D). Power use : 6 amp @ 12V – 72 watt. Lumen : 7800 Raw, 6300 Effective.

Use for : Large 4 WD tractors, Tractors, Yellow equipment and more.



### LED-90

5.5" Square, 90 watt of CREE power, 8100 lumen. 90° flood pattern. Light the night !! This light is crazy bright, Better than HID lights, this is the light recommended for large tractors, where distance and width is needed. LED Power: 90W. 9 x 10w CREE LEDs. Size : 5.4 x 6.2 x 5.12 (W x H x D). Power use : 6.2 amp @ 12V – 75 watt. Lumen : 9000 Raw, 6300 Effective.

Use for : Large 4 WD tractors, Yellow equipment and more.



# LEDs

## LED Search Light

50 watt wireless remote controlled search light, magnetic or "docking station" mounting. Cigarette lighter plug-in. Wireless Remote control LED search light. Size 7.3 x 9 x 5.9 (W x H x D). 359° rotation, 30° tilt. LED Power: 50Watt CREE LED Each 5W/PC. Light output about 4500 lumen raw / 3720 Effective.



## Rock Light

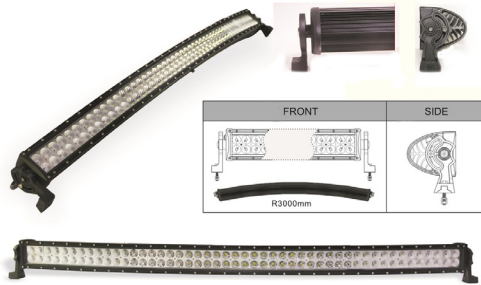
Rock Lights have a flat back that can be glued on with the 2 sided tape included. You also get a rubber cushion for screw mounting to flat surface (included), and a rubber cushion for a pipe mount (included) Rock light housing is black aluminum, the light can be ordered in White, Red, Blue, Green and Amber. Size : 2.7 x 1.4 x 3/8 (IL x W x D). 275 Lumens Each. 3.5 Watt, 0.29 Amps @ 12V. Use for : Pickup box light, great for vehicle under glow, Under the hood, Lights on controls and much more.



## Curved LED Light Bars

We have 4 sizes of curved LED light bars, 22" / 32" / 42" and 50" wide. The bars mount with single mounts at each end of the bar. LED light bars are a great distance light, most used is the "combo" beam bar – flood light at each end of the bar, and spot lights in the middle. We do have the 22" & 32" bar in a flood only model if used in a location where flood light only is desired. CREE LED's 3 watt each. Beam patterns : 60° flood (22 & 32inch bar) Combo beam (60° flood and 10° spot).

Where used ? They get used on pickups more than anything else, (not legal for hwy use) but also on ATV's and tractors. Some used the 22/32 inch models in flood only on combines, and report back that the light works really well.



Model	Lenght	Power	LED's (QTY)	Lumens by factory	Lumens by watt x 90	Beam pattern
F2 - 120	22"	120 Watt/ 84 watt real	40	9600	7560	Flood / Combo
F2 - 180	32"	180 Watt/ 98 watt real	60	14400	8820	Flood / Combo
F2 - 240	42"	240 Watt/ 117 watt real	80	19200	10530	Combo
F2 - 288	50"	288 Watt/ 140 watt real	96	23040	12600	Combo

## D1 Series LED Light Bars

We have 2 models of the D1 Light bar series, an 11" and a 25" model. The 11" can be ordered as flood or spot, the 25" is a "combo" bar only. A "combo" bar is a combination of 45° flood and 15° spot lights, and gives a nice distance light with some flood light. CREE LED's 5 watt each. The mounts on the D1 series light bars are heavy duty, a very strong mount that will hold the light in place in any conditions. We have used the D1 bars on tracked tile plows and dozers, but also on pickups and more.



Model	Lenght	Power	LED's (QTY)	Lumens by factory	Lumens by watt * 90	Beam pattern
D1 - 11	11"	60 Watt/ 55 watt real	12	7500	4950	Flood or Spot
D1 - 25	25"	150 Watt/ 155 watt real	30	18750	13950	Combo

## A2 Series LED Straight Light Bars

We have 4 sizes of straight LED light bars, 26" / 32" / 44" and 50" wide. The bars mount with 2 to 4 stainless steel brackets under the bar. LED light bars are a great distance light, the A series is a combo bar only, 60° flood light at each end of the bar, and 30° spot lights in the middle. Epistar LED's 3 watt each. The A series is a cost efficient choice with a nice light output.



Model	Lenght	Power	LED's (QTY)	Lumens by factory	Lumens by watt x 80	Beam pattern
A2 - 144	26"	120 watt/ 70 watt real	48	8400	5600	Flood / Combo
A2 - 180	32"	180 watt/ 82 watt real	60	12600	6560	Flood / Combo
A2 - 252	44"	252 watt/ 94 watt real	84	17640	7520	Combo
A2 - 288	50"	288 watt/ 108 watt real	96	20160	8640	Combo

## High Power LED bulbs

This is not your standard turn signal LED bulb, the high power LED bulbs are at HID level with an output of over 3000+ lumen, and new bulbs with 4000-5000 lumen are coming.

Models we currently stock – a Fan Less and a model with a cooling fan built in. We recommend using the "Fan" type in any enclosed areas to keep the bulb cool, example would be in a combine cab.

There have been some reports about radio static from the fan type bulbs, this can be a problem if your radio signal is weak, and the bulb is close to the radio antenna / radio.

The "Fan Less" type works well if there is air flow to cool the fans, example would be on top of a fender light. There is no radio interference from the fan less bulbs.

The LED bulbs are "plug and play" - makes it an easy install ! A new bulb is the SP11, developed for some CaseIH and Gleaner combines, and can be used in any application using the SP11 base.



Model/Type	880	9005	9006	H8	H9	H11	SP11
No Fan	x	x	x	x	x	x	
Fan Type		x	x			x	x

Model/Type	H4 Hi-Lo	H13 Hi-Lo	9004 Hi-Lo	9007 Hi-Lo
No Fan	x		x	x
Fan Type	x	x	x	x

## COOL FACTS

Here are just some of the cool characteristics of LED's:

- **Energy savings:** they use at least 75 percent less energy than incandescents.
- **Long life, low maintenance:** LED lights last 35 to 50 times longer than incandescents.
- **Size advantage:** LEDs can be very compact and low-profile.
- **Durable:** unlike bulbs, they have no breakable glass or filaments.
- **"Instant on":** LEDs require no warm-up time like HID does.

# DOT APPROVED LIGHTS

Headlight must be securely mounted and properly aimed such that the beam pattern "cut off line" complies with all applicable regulations. If you are not familiar with the legal requirements for aiming your headlights, please see a professional service provider, we recommend that headlights are aimed with a headlight aiming system for proper alignment.

## DOT Approved LED Headlights

### United Pacific 4 x 6 inch Sealed Beam LED

4" x 6" Rectangular Headlight with 1 High Power CREE LED Solid state design resists shock and vibration, impact resistant polycarbonate lens provides unparalleled protection from road hazards. Improves visibility with whiter light output that is closer to daylight. Die-cast aluminum housing provides maximum protection from the elements

**Low Beam Version, Part # 31396 4" x 6" - Low Beam**

0.80 Amps @ 12.8V DC (10.1W)

0.35 Amps @ 28.0V DC (8.96W)

**High Beam Version, Part # 31397 4" x 6" - High Beam**

1.10 Amps @ 12.8V DC (15.7W)

0.50 Amps @ 28.0V DC (14.56W)



### United Pacific 7" Round LED

#### Hi-Lo Headlight

5 High Power LED 7" Headlight, PHILIPS LUMILEDS Reinforced Aluminum Reflector, Rugged Anti-Vibration Construction.

Improve Visibility with Whiter Light Output that is Closer to the Color Temperature of Daylight.

Replacement for H6024, H5024, H6024LL, 6012, 6014, 6015, 6016, and 6017 and other brands.



### United Pacific LED 5" x 7"

#### Hi-Lo Headlight

5 High Power LED 5" x 7" Headlight PHILIPS LUMILEDS

High and Low Beam Function

Reinforced Aluminum Reflector

Rugged Anti-Vibration Construction

If they are used as DRL, some units might require a resistor, which we can supply as well.



### Larsen Lights Tuffplus LED Headlight

DOT approved : FMVSS 571.108

Excellent on the road (DOT) headlights. Perfect cut off line on low beam so you don't blind oncoming traffic. Nice white light makes it safer to drive at night. You will feel more awake due to the white light, that also helps you see what's in front of your big rig...

How does this compare to halogen sealed beam ? A standard halogen sealed beam is around 650 effective lumen on high beam, the LED is at 1589 / 1748 lumen on high beam. It is twice the light, and the light is the nice white color!

### 7" Round, Model A0101 Hi-Lo

2042 Lumen raw / 1134 effective @ 28W on Low Beam

( 2.3 amp @ 12V)

3180 Lumen raw / 1589 effective @ 36W on High Beam

( 3.0 amp @ 12V)



### 5" x 7" Model A0102 Hi Lo

2246 Lumen Raw / 1247 Lumen effective

@ 35.2 W on Low Beam ( 2.9 amp @ 12V)

3498 Lumen Raw / 1748 Lumen effective

@ 44.6 W on High Beam ( 3.7 amp @ 12V)



# HIDs

## How They Work

High-intensity discharge lamps (HID lamps) are a type of electrical gas-discharge lamp which produces light by means of an electric arc between tungsten electrodes housed inside a translucent or transparent fused quartz or fused alumina arc tube. This tube is filled with both gas and metal salts. The gas facilitates the arc's initial strike. Once the arc is started, it heats and evaporates the metal salts forming plasma, which greatly increases the intensity of light produced by the arc and reduces its power consumption.

### SF-78

The SF-78 is a 55 watt Oval HID Flood light, output is over 4500 lumen raw, using around 4.7 amp after warm up. This light is great for row crop tractors, combines & construction equipment. Extremely strong built light ! Use for : Tractors, Combines.



### SF-18

This is the light for the row crop tractor ! Wide flood. Very bright and nice beam pattern. 55 watt HID Flood light using 4.7 amp after warm up. Nicest wide flood pattern while still providing some distance. 4.5" square light. Use for : Tractors, Combines.



### SF-98

The SF-98 is a 70 watt HID light that gives a nice mix of distance and flood light. Used on the front of tractors to give a perfect driving light. Some customers use the light on the rear fenders to lighten up very wide equipment. This is a large 7" round light. Use for : Tractors, off road vehicles.



### HMW-2012

The HMW is a 55 watt rectangular 4x6 inch HID Flood light, output is over 4500 lumen raw, using around 4.7 amp after warm up. This light is great for row crop tractors, combines & construction equipment. Extremely strong built light ! Use for : Tractors, Combines.



### NV-4 Series

4.5" square, 35 watt HID light. Very reliable HID light that can be used anywhere. 3.3 amp use, 3200+ lumen raw. Can be ordered as wide flood, full flood, euro beam (mix distance and flood) and pencil beam. Use for : Tractors, Combines and more.



## HID CONVERSION KITS

**We can convert most halogen bulbs to HID, this is a cost efficient way of improving your head lights and some work lights on your tractor or combine.**

We also have the D1 and D2 ballasts, those are typically used in OEM HID lights.

We offer the standard kit, and 2 bulb models as an "All in One" kit. Included in the standard slim kit is 2 ballasts and 2 HID bulbs, in 35 watt or 55 watt. The install is easy - replace the halogen bulb with the HID bulb, mount the ballast within 12" to 15" from the light, connect the 2 wires from the bulb to the ballast, plug the power connector into the ballast, and you are done! A 35 watt kit is rated 3200 lumen, a 55 watt 4500+ lumen, but effective lumen depends on your light fixture / lens.

The "All in One" kit is only 35 watt, and we have the 880 series bulbs and 9005 bulbs in 4300k and 6000k. Included in the kit is 2 bulb/ ballasts.

Bulbs in-stock :H1, H3, H4 single, H4 Hi-Lo, H4/h (HID on high beam, halogen on low) H7, H8, H9, H10, H11, H13 Hi-Lo, 880 series, 9004 single, 9004/h (HID on high beam, halogen on low) 9005, 9006, D1, D2.

